

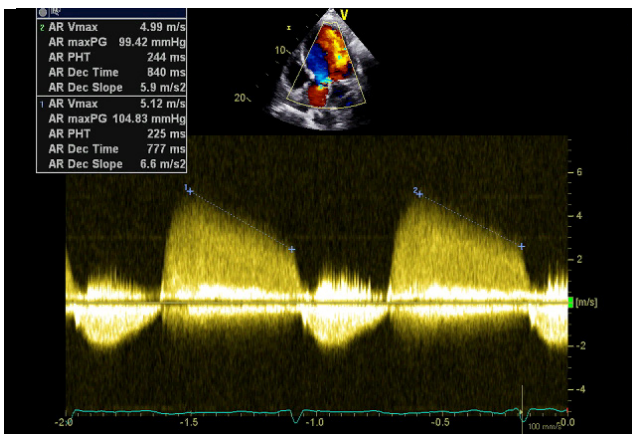
THE VALVES

Detecting aortic regurgitation

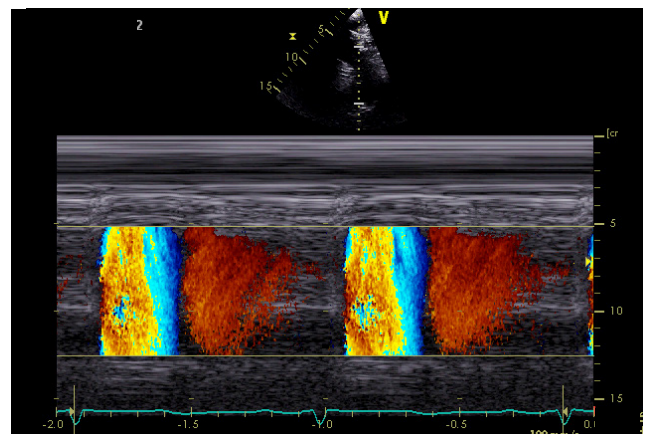
Assessing severity of aortic regurgitation:

	Mild	Moderate	Severe
Color/LVOT height (%)	< 25	25–64	> 65
Width (mm)	< 3	3–6	> 6
Reversal descending aorta	None	Not holodiastolic	Holodiastolic
PHT (ms)	> 500	200–500	< 200
Continuous wave intensity	Faint	Intermediate	Dense as forward flow

PHT is the pressure half time of the continuous wave Doppler signal lined up with the regurgitant jet; LVOT = left ventricular outflow tract.



Continuous wave Doppler



Color M-mode of flow reversal